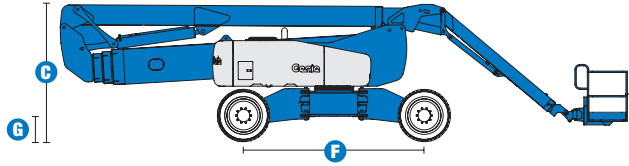
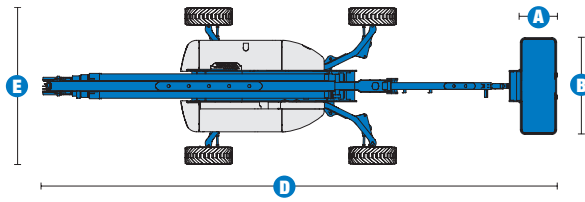


Specifications



MODEL		Z™-135/70	
MEASUREMENTS	Metric	US	
Working height maximum*	43.15 m	141 ft	
Platform height maximum	41.15 m	135 ft	
Horizontal reach maximum - riser extended	18.03 m	59 ft 2 in	
Horizontal reach maximum - riser retracted	21.26 m	69 ft 9 in	
Up-and-over clearance maximum -			
riser extended	23.01 m	75 ft 6 in	
riser retracted	9.91 m	32 ft 6 in	
Below ground reach	5.87 m	19 ft 3 in	
A Platform length - 8 ft/6 ft model	91 cm / 76 cm	3 ft / 2 ft 6 in	
B Platform width - 8 ft/6 ft model	2.44 m / 1.83 m	8 ft / 6 ft	
C Height - stowed	3.07 m	10 ft 1 in	
D Length - stowed	12.93 m	42 ft 5 in	
E Width - axles extended	3.94 m	12 ft 11 in	
Width - axles retracted	2.46 m	8 ft 1 in	
F Wheelbase - axles extended	4.11 m	13 ft 6 in	
Wheelbase - axles retracted	4.72 m	15 ft 6 in	
G Ground clearance - centre	51 cm	1 ft 8 in	

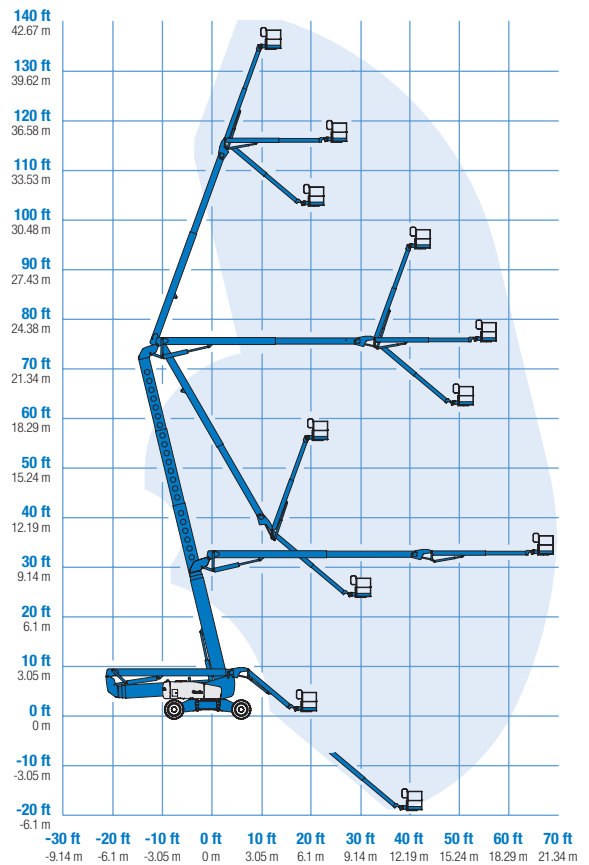
PRODUCTIVITY			
Lift capacity	272 kg	600 lbs	
Platform rotation	160°	160°	
Vertical jib rotation	110°	110°	
Turntable rotation	360° continuous		
Turntable tailswing - axles extended riser up	79 cm	2 ft 7 in	
Turntable tailswing - riser down	4.27 m	14 ft	
Drive speed - stowed	4.8 km/h	3.0 mph	
Drive speed - raised	1.1 km/h	0.68 mph	
Lift speed to full height	96 sec	96 sec	
Gradeability**	45%	45%	
Inside turning radius - axles extended	2.29 m	7 ft 6 in	
Inside turning radius - axles retracted	5.51 m	18 ft 1 in	
Outside turning radius - axles extended	5.64 m	18 ft 6 in	
Outside turning radius - axles retracted	7.77 m	25 ft 6 in	
Controls	12 V DC proportional		
Tyres (Foam filled)	445/65 D22.5 18 ply		

POWER			
Power source	Deutz Diesel TD 2011 L04i 4-cylinder diesel, 75 hp (56 kW) Perkins 804-33T 4-cylinder turbo diesel, 83 hp (62 kW) Cummins B3.3T C80 4-cylinder turbo diesel, 80 hp (59.8 kW)		
Auxiliary power unit	12 V DC	12 V DC	
Hydraulic tank capacity	246.1 L	65 gal	
Fuel tank capacity	151.4 L	40 gal	

WEIGHT***			
CE	20,366 kg	44,900 lbs	
CE max	20,693 kg	45,620 lbs	

STANDARDS COMPLIANCE CE EN280

RANGE OF MOTION Z™-135/70



* The metric equivalent of working height adds 2 m to platform height. U.S. adds 6 ft to platform height.

** Gradeability applies to driving on slopes. See Operator's Manual for details regarding slope ratings.

*** Weight will vary depending on options and/or country standards.

Features

EASILY CONFIGURED TO MEET YOUR NEEDS

PLATFORM OPTIONS

- Steel 2.44 m (8 ft) (standard)
- Steel 1.83 m (6 ft)
- 2.44 m (8 ft) tri-entry platform

JIB

- 3.66 to 6.10 m (12 to 20 ft) Jib-Extend™

POWER

- Deutz diesel 75 hp (56 kW)
- Perkins diesel 83 hp (62 kW)
- Cummin diesel 80 hp (59.8 kW)

DRIVE/STEER

- 4 x 4 (standard)
- 4 - wheel steer (standard)

TYRE

- Rough terrain, foam-filled (standard)

STANDARD FEATURES

MEASUREMENTS

- 43.15 m (141 ft) working height
- 21.26 m (69 ft 9 in) horizontal reach
- 23.01 m (75 ft 6 in) up-and-over clearance
- Up to 272 kg (600 lb) lift capacity

PRODUCTIVITY

- X-Chassis™ extendable axles
- 3.66 to 6.10 m (12 to 20 ft) Jib-Extend™
- Self-levelling platform
- Hydraulic platform rotation
- Fully proportional Hall effect controls
- Thumb rocker steer
- On-board full diagnostics and engine monitoring display
- ALC 1000 electronic control system
- Hydraulic oil cooler
- Drive enable
- AC power cord to platform
- Horn
- Hour meter
- Tilt alarm
- Descent alarm
- 360° continuous turntable rotation
- Four wheel high angle steer
- Four steering modes: front, rear, crab and coordinated
- Four wheel brakes
- Full-time positive traction 4WD
- Adjustable foot switch timeout
- Two-speed wheel motors



STANDARD FEATURES cont.

- Configurable controls to limit lift height to 27.74 m (91 ft)
- Engine status display
- Certified load sensor

POWER

- All engines are emission compliant
- 12 V DC auxiliary power
- Engine protection package
- Deutz intake air heater
- Swing out engine tray

OPTIONS & ACCESSORIES

PRODUCTIVITY

- Platform swing gate
- Half mesh platform inserts with swing gate
- Platform top auxiliary rail
- Air line to platform
- Basic hostile environment kit
- Deluxe hostile environment kit
- Tool tray
- Fluorescent tube caddy
- Pipe cradle (pair)
- Flashing beacon and travel alarm
- Platform work lights
- Front driving lights
- Lockable platform control box covers
- Fire resistant hydraulic oil
- Biodegradable hydraulic oil
- Weld leads to platform

POWER

- AC Generator Packages (110V/60Hz, 3000 W or 220V/50Hz, 2500 W)
- Cold weather packages
- Arctic hoses
- Diesel scrubber muffler (Cummins)
- Diesel scrubber/spark arrestor muffler (Deutz and Perkins)
- Diesel spark arrestor muffler (Deutz and Perkins)
- Intake air precleaner

Distributed By:

UK

Millennium House
Brunel Drive
Newark NG24 2DE
UK
Tel: +44 (0)1476 584333
Fax: +44 (0)1476 584334

France

10, ZA de la Croix St. Mathieu
28320 Gallardon
France
Tel: +33 (0)2 37 26 09 99
Fax: +33 (0)2 37 26 09 98

Germany

Finienweg 3
28832 Achim/Bremen
Germany
Tel: +49 (0)4202 8852-0
Fax: +49 (0)4202 8852-25

Spain

Gaià 31, Pol. Ind. Plá d'en Coll
08110 Montcada i Reixac
Barcelona
Spain
Tel: +34 93 572 50 90
Fax: +34 93 572 50 91

Scandinavia

Importgatan 17
422 46 Hisings Backa
Sweden
Tel: +46 31 57 51 00
Fax: +46 31 57 90 20

Middle East

Terex Middle East
PO Box 282325, Dubai
U.A.E.
Tel: +971 4 885 8030
Fax: +971 4 885 6364
Email: awp.infome@terex.com

Genie United States

18340 NE 76th Street
P.O. Box 97030
Redmond, WA
USA 98073-9730
Tel: +1 425 881-1800
Fax: +1 425 883-3475

Email: AWP-InfoEurope@terex.com